



WE SELL THE
**COMPLETE
PACKAGE** FOR
YOUR GRANITE &
SOLID SURFACE
APPLICATIONS

- Abrasives
- Adhesives
- Dispensing Guns
- Sealants
- Silicones

- Specialty Chemicals
Tapes
- No-Drill Bonding
FastenersTM
- CounterBalanceTM

Order online at www.chemical-concepts.com or call 1.800.220.1966



The First of its Kind....

C-30 Marblemaster Marble Seaming Adhesive

Order TODAY



800.220.1966

Introducing the C-30 Marblemaster seaming adhesive, designed to provide perfect near invisible seams on marble. It can be used on all of those popular marble-like colors of quartz surfacing. It even works well on the granite and other natural stone

Order Today

- Has a Fast Gel and Cure Time
- Forms Strong Durable Bonds
- Has Ideal Viscosity for Laminating and Mitre Joints
- Provides Consistent Results
- Low-VOC, Air Quality-Certified
- Uses Standard Cartridges



Chem-Set™ C-20

Seaming Adhesive for Surface Fabrication Use

NEW Faster gelling and curing • Whitest whites available • Match Any Color

Decades of adhesive experience in one, convenient tube!

Chem-Set™ C20 by Chemical Concepts is the result of years of hands-on experience and in-depth product knowledge centered around providing the industry's best UV stable, non-yellowing adhesive for solid surface, engineered stone, and natural stone products.

We've developed Chem-Set™ C20 to be the best adhesive on the market:

Why turn to Chem-set™ C-20 adhesives over competitors?

- Faster gelling and curing times.
- Whitest whites in the industry, brighter than its competitors.
- Best color matches in the industry. We will match ANY color!
- Quickest adhesive to fixture and subsequently fabricate.
- Bonds better to quartz, stone, marble, and porcelain products better than its competitors due to its additives.
- Best UV package in the industry.
- Uses the same cartridge style, with the same tip design that every major solid surface supplier uses.
- Custom colors available at low minimums for that perfect match on new solid surface and quartz colors. (min 2 cart.)
- Made in the USA, in close proximity to 70% of the population of the United States. Our competition's is produced in Vancouver, Canada, 2,000 miles away.

Order today at www.chemical-concepts.com, or call us at 800-220-1966 to speak with our adhesive experts!

Whats new over competitors!

Faster gelling and curing times

Whiter whites

Match ANY Color



Chem-Set™

C-31

PRO BOND Bond Enhancer and Surface Cleaner

The Chem-set C31 Pro Bond adhesion promoter allows you to immediately glue natural and engineered stone products that are still wet from wet saws, water jets and other water assisted cutting equipment. This saves a great deal of time on laminated and mitered edges while eliminating the need to use torches, dryers, fans and extended periods of air drying typically required for adhesives used in the stone industry.

Simply blow off the standing water with an air hose, apply the C31 Pro Bond on both sides of your joint and wipe off with a dry rag. Your substrate is now ready for bonding using our C20 or C30 series seaming adhesives.

- Bond to wet/moist stone products
- No need to use torches, dryers, and TIME to dry off stone
- Improve adhesion to difficult surfaces such as porcelain, glass, Dekton®, Neolith and other sintered stone products
- No more cutting notches or kerfs in your joints
- Create stronger bonds on all stone products
- Available in convenient marker applicator, as well as 1 gallon and 5 gallon cans
- Use with Chem-set stone repair kits to avoid "popped" or faulty repairs



chemical-concepts.com
410 Pike Road
Huntingdon Valley, PA 19006
(800) 220-1966



2 Ounce
SKU: CCA-C31-20MLAPP

Chem-set C31 PRO BOND will save time and money!

Chem-Set™

C-40

INLAYMASTER ADHESIVE

NEW Two-Part flowable methacrylate specifically designed for creating inlays

Decades of adhesive experience in one, convenient tube!

The Chem-set C40 Inlaymaster Adhesive is a two-part, flowable methacrylate specifically designed for creating inlays in solid surface (acrylic and polyester and blends), and other materials. The C40 Inlaymaster features a low temperature cure (exotherm) and air release agents as well as being ultra violet light stable, and non-yellowing for improved aesthetics. Combined at a ratio of 10:1 (10 parts resin, one part activator), Inlaymaster adhesives have a working time of 10 to 15 minutes and achieve nearly 90 percent of its ultimate strength in 25 to 30 minutes at room temperature curing.

Advantages:

- Perfect for logos, inlays, buttons and clear “windows” in solid surface and other materials.
- Flowable, low viscosity adhesive fills cavities and self levels for easier finishing.
- Air release agents reduce or eliminate bubbles and other imperfections associated with other adhesives.
- Lower temperature chemical reaction prevents boiling and overheating of material.
- Compatible with standard dispensers for solid surface adhesive.
- Available in 50ml, 250ml and 490ml cartridges.
- Available in over 90+ colors, as well as PMS colors to match Logos and other artwork.

Flowable, Low Viscosity!
Perfect for logos and inlays



Order today at www.chemical-concepts.com, or call us at 800-220-1966 to speak with our adhesive experts!



Table of Contents



Chemical Concepts

Our customers stick with us.

Why Buy? 4

CounterBalance 5-9

Seaming Adhesives 10

Adhesive Sealants..... 11-12

Epoxies/Acrylics 13

Contact Cement 14

Underwater Adhesive/Aerosols..... 15

Aerosols 16

Hot Melts 17

Hot Melt Dispense Guns 18-19

Dispense Guns..... 20

Stone Repair Kits..... 21

Abrasives..... 22

Sanders, Abrasives and Pads 23

Tapes 24-25

Undermount Sinks 26-27

Bonding Fasteners..... 28-31

Why Buy?



Buy from the Adhesive Innovators not the Immitators!

**Rely on the Adhesive Experts...
with answers to your questions based
on over 40 years of experience in the
stone fabrication industry.**



WHY BUY YOUR ADHESIVES AND SUPPLIES FROM CHEMICAL CONCEPTS?

Our experience is unlike any other general distributor. We focus on adhesives, adhesive systems, and adhesive applications. Using adhesives successfully requires more than just buying the right tube of glue. Proper surface preparation, application methods, fixturing, etc, will determine the difference between 100% success or application failure. We deliver everything you need to get the job done right, including free consultation on special applications.

The track record of Chemical Concepts results from over 40 years of servicing industry markets. Not only do we know adhesives, we know your requirements.

Our stock is fresh. We order more adhesives in one month than a general distributor orders in a year. Plus we have industrial refrigeration in our warehouse to ensure peak product freshness. Our products will never be out of date or improperly stored.

Rely on the Adhesive Experts—with answers to your questions based on our 40+ years of experience servicing fabrication markets.

Top Represented Manufacturers. Learn why our customers continue to stick with us!





CounterBalance®

COUNTER

BALANCE®

The support you don't see.



CounterBalance® Workstation Brackets | CCH-CBWB

Available Sizes:

5" x 8"	8" x 12"
12" x 18"	15" x 21"
18" x 18"	18" x 24"
24" x 24"	24" x 29"

Product Uses:

- Handicap accessible vanities and workstations
- Weight Bearing Shelving

Product Details:

- 1/8" steel construction
- Very strong - exceeds-1,000 lbs load limit
- 1 1/2" mounting surface with multiple 1/4" holes per side
- Standard color textured powder coat finishes:

Black, white, gray, almond, stainless steel and pre-primed for your own finish

3" x 3" - 45 notch that allows for wall cleat and wire run clearance packaged in equal quantities of "rights" and "lefts"
Brackets are reversible



CALL today for pricing and become one of our distributors • FREE showroom display

COUNTER

BALANCE®

The support you don't see.

Manufactured by Chemical Concepts, Inc.



CounterBalance®

**POWDER
COATED**


9 3/4" or 247.7mm length

CounterBalance® COUNTER PLATE

- Supports 13" overhangs
- High Strength Steel (HRPO Steel*)
- 3 Countersunk Mounting Holes
- Available in kits of 3 or 6
- Powder Coated to prevent corrosion
 - Length: 9 3/4" (247.7 mm)
 - Width: 3 1/2" (89 mm)
 - Thickness: 7 GA (.144") 3.7 mm

**POWDER
COATED**


11 3/4" or 298.5mm length

CounterBalance® COUNTER PLATE XL

- Supports up to 15" overhang
- High Strength Steel (HRPO Steel*)
- 3 Countersunk Mounting Holes
- Available in kits of 3 or 6
- Powder Coated to prevent corrosion
 - Length: 11 3/4" (298.5 mm)
 - Width: 3 1/2" (89 mm)
 - Thickness: 7 GA (.144") 3.7 mm

**POWDER
COATED**


11 3/4" or 298.5mm length/height

CounterBalance® CORNERPLATE

- Supports 18" overhangs forward and 14" overhang to the side
- High Strength Steel (HRPO Steel*)
- 3 Countersunk Mounting Holes
- Kit of 1; w/screws
- Powder Coated to prevent corrosion
 - Length: 11 3/4" (298.5 mm)
 - Width: 3 3/4" (95.25 mm)
 - Thickness: 7 GA (.144") 3.7 mm

 See our complete line of CounterBalance® products @ chemical-concepts.com



CounterBalance®

POWDER COATED



POWDER COATED



NEW!



9 3/4" or 247.7mm length

NEW!



11 3/4" or 298.5mm length

CounterBalance® ISLAND BAR

- Supports 18" overhangs • High Strength Steel (HRPO Steel*)
- Corners are to be rounded for safety • Available in kits of 3
- Powder Coated to prevent corrosion
 - Length: 24" (610 mm) long
 - Width: 1 1/2" (38.1 mm) height x 1 3/4" (44 1/2 mm) high
 - Thickness: 7 GA (.144") or 3.7 mm

CounterBalance® ISLAND BAR MINI

- Supports 18" overhangs • High Strength Steel (HRPO Steel*)
- Corners are to be rounded for safety • Available in kits of 3
- Powder Coated to prevent corrosion
 - Length: 18" (457.2 mm) long
 - Width: 1 1/2" (38.1 mm) height x 1 3/4" (44 1/2 mm) high
 - Thickness: 7 GA (.144") or 3.7 mm

CounterBalance® STAINLESS STEEL COUNTERPLATE

- Supports up to a 13" overhang • 3 Countersunk Mounting Holes
- Made from 304 stainless steel for strength and durability
 - Length: 9 3/4" (247.7 mm) • Width: 3 3/4" (95.25 mm)
 - Thickness: 7 GA (.144") 3.7 mm

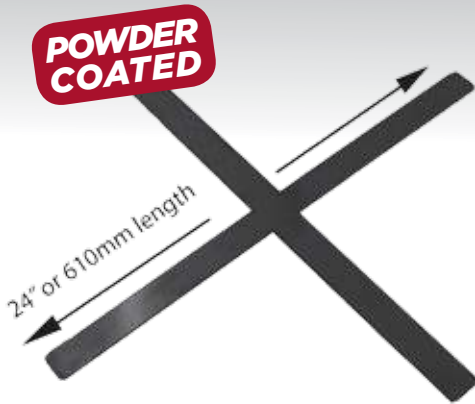
CounterBalance® STAINLESS STEEL COUNTERPLATE XL

- Supports up to a 13" overhang • 3 Countersunk Mounting Holes
- Made from 304 stainless steel for strength and durability
 - Length: 11 3/4" (298.5 mm) • Width: 3 3/4" (95.25 mm)
 - Thickness: 7 GA (.144") 3.7 mm

See our complete line of CounterBalance® products @ chemical-concepts.com

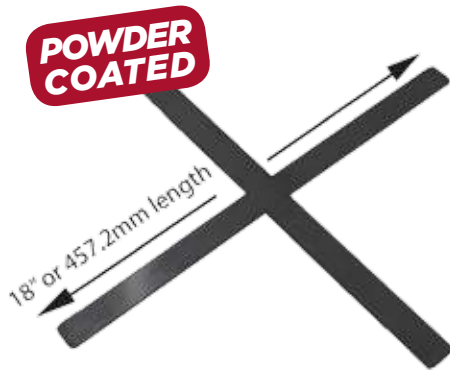


CounterBalance®



CounterBalance® CROSSBAR

- Supports 18" overhangs
- High Strength Steel (HRPO Steel*)
- Powder Coated to prevent corrosion
 - Length: 24" x 24" length (610 mm x 610 mm)
 - Width: 1 1/2" (38.1 mm) height x 1 3/4" (44 1/2 mm) high
 - Thickness: 7 GA (.144") 3.7 mm



CounterBalance® CROSSBAR MINI

- Supports 18" overhangs
- High Strength Steel (HRPO Steel*)
- Powder Coated to prevent corrosion
 - Length: 18" x 18" length (457.2 mm x 457.2 mm)
 - Width: 1 1/2" (38.1 mm) height x 1 3/4" (44 1/2 mm) high
 - Thickness: 7 GA (.144") 3.7 mm



Available in various sizes:
12", 18", 24"

*Stock items

CounterBalance® HYBRID BRACKET

- Can be installed as either a surface mount or a concealed bracket
- Designed to attach to load-bearing studs
- 1/8" steel construction with powder-coated finish
- Very strong- supports load limit range of 1,800 lbs to 7,960 lbs per pair - countertop can extend up to 6" beyond the support
- Has a tubular vertical arm (1.5 by .75 inches) and a 1.5" horizontal T. Hardware not included
- Comes in two colors: black and white
 - Length: 12"x12", 18"x18" & 24"x24" lengths
 - Width: 1 1/2" (38.1 mm) height x 1 3/4" (44 1/2 mm) high
 - Thickness: 7 GA (.144") 3.7 mm

See our complete line of CounterBalance® products @ chemical-concepts.com



CounterBalance®



CounterBalance® CONCEALED BRACKET

- Low-profile brackets provide a clean, “floating” look for your countertop
- Available lengths: 9”, 12”, 18”, and 24”
- Supports should be placed every 16” to 20”
- Available colors: white, black, grey and almond



CounterBalance® EXTENDED CONCEALED BRACKET

- Low-profile brackets provide a clean, “floating” look for your countertop
- Available lengths: 9”, 12”, 18”, and 24”
- Supports should be placed every 16” to 20”
- Available colors: white, black, grey and almond



Available in various sizes:
5 x 8, 8 x 12”, 12 x 18”, 15 x 21”,
18 x 18, 18 x 24”, 24 x 24”, 24 x 29

*Stock items



CounterBalance® WORKSTATION BRACKETS

- Handicap accessible vanities and workstations
- Stone and solid surface • Weight Bearing Shelving
- 1/8” steel construction
- Very strong- exceeds-1,000 lbs load limit
- 1 1/2” mounting surface with multiple 1/4” holes per side
- Standard color textured powder coat finishes:
Black, white, gray, almond, stainless steel and pre-primed for your own finish
 - Length: 11 3/4” (247.7 mm)
 - Width: 3 3/4” (95.25 mm)
 - Thickness: 7 GA (.144”) 3.7 mm
- Length: 24” x 24” length
- Width: 1 1/2” (38.1 mm) height x 1 3/4” (44 1/2 mm) high
- Thickness: 7 GA (.144”) 3.7 mm

See our complete line of CounterBalance® products @ chemical-concepts.com



Seaming Adhesives

Chem-Set™

Color matches to **ALL** stone colors

C-19 SEAMING ADHESIVE



GLUE WE PUT

from the people that understand **ALL** your adhesives **NEEDS**

- **10:1 Trusted Product**
- **25+ years of experience and success!**

We match Corian®, LG Hi-Macs®, Staron®, Avonite®, Gibraltar®, Formica®, Ceaserstone, and many more.

MADE IN USA
For Solid Surface & Engineered Stone

No change in process or equipment

GUARANTEED SAME DAY SHIPPING
On orders received before 3:00pm



Greenguard Certified

We know Solid Surface & Engineered Stone Adhesives

Looking for the perfect seam?

The C-19 seaming adhesive, from Chemical Concepts, is now available in colors to match common types of marble in seaming and edge-bonding applications. If you use Calacatta, Thassos or Carrara in your fabrication, you will want to check out the best match in the business. Enjoy the time saving benefits of our convenient cartridges available in over 80 colors to match a huge array of surfaces.

- No hand mixing needed to match colors
- Long lasting strength
- Easy to use
- STATE OF THE ART acrylic adhesive
- Uses industry standard mixers
- 250ML • 18 month shelf life
- Competitive pricing
- Cross reference matches to 50 manufacturers

C-19 Seaming Adhesive Color Match Tool

Check it out on our website

chemical-concepts.com/c-19seamingadhesivecolormatchtool

3 Simple Steps

- 1 Select the solid surface manufacturer.
- 2 Select the color you need to match.
- 3 Listed Chemical Concepts equivalent color will display with part number.

OR

See Resource page of our website and download a PDF: C-19 seaming adhesive color match chart

Cross match to 50 manufacturers to find your color fast!



Adhesive Sealants



Bondaflex 100

General purpose, one-component, 100% RTV acetoxy silicone sealant.

- Colors: white, translucent, trans-white, glacier white, bone and cameo



Chem-Set™ RTV 4500

General purpose, one-component, 100% RTV acetoxy silicone sealant.

- Colors: clear, trans/charcoal, trans/blue, trans/gray, trans/white, trans/beige, trans/green, trans/rose, trans/brown, trans/earthtone, white, almond, taupe, cameo/biscuit, gray, orchid, mexican sand, sandbar, rock creek



Chem-Set™ RTV 7500

Neutral cure, one-component, RTV oxime silicone sealant, low odor and non-corrosive.

- Colors: clear, white, black, aluminum, gray, bronze, almond



Chem-Set™ RTV 3500 *Mildew Resistant*

Neutral cure, one-component, room temperature vulcanizing RTV acetoxy cure silicone sealant, formulated to offer all weather performance to meet today's Green Building Standards.

Exceptional Mildew resistance.

- Colors: clear, white, black, aluminum, almond, bronze, gray, trans white (custom colors available upon request)



Sika AnchorFix-2

Two component, solvent and styrene free anchoring adhesive.

Must use with a good quality caulking gun. Minimum 18:1 thrust ratio.

See our complete line of adhesive sealants @ chemical-concepts.com



Adhesive Sealants

Innovative Ideas to Bond Your Future

A one component, high strength adhesive / sealant with excellent adhesion to pre-painted metals, plywood, glass, aluminum, steel, SMC, Rim, FRP and many plastics and composites. 100% solids (contains no solvents), containing no isocyanates. Paintable and sandable, tack free in 45 minutes.



Chem-Set™ 75-AM One-Part Adhesive/Sealant High performance elastomeric adhesive sealant

- 2 times the bond strength of silicone -Lap shear 250-330 PSI
- 100% VOC HAPS/Compliant -75°F to 250°F (operating temp range)
- Shelf life 9 months • 24 tubes per case

Chem-Set™ MS-35 Hybrid adhesive sealant, strong and flexible

- Available in 10.3 standard caulking cartridge
- 2 times the bond strength of silicone -Lap shear 250-330 PSI
- 100% VOC HAPS/Compliant -75°F to 250°F (operating temp range)
- Shelf life 9 months • 24 tubes per case

75 AM and MS 35 Benefits: • Combines best qualities of urethane and silicone sealants • High early green strength/same day painting • Bonds to most substrates without priming • Wide range of applications • Ready to use, labor cost reduction • Easier to match contour of parts • Vibration damping • Improved aesthetics • Low dirt pick-up • Speed and ease of application • Save application steps. **75 AM and MS 35 Applications:** Because of its strength, it may be used to reduce the use of mechanical fasteners waterproofing lap seams, floor and roofing, specific fabrication applications and sealing all joints. Call for technical information on your specific application.

Chem-Set™ PB-3 One-component, latex sealant. Paintable, mildew resistant and non-yellowing.

- Colors: clear, white, almond • Water clean up

Sikaflex 221 High strength polyurethane adhesive/sealant, non-sag, low odor, sandable and paintable.

- Colors: white, grey and black

See our complete line of adhesive sealants @ chemical-concepts.com



Epoxies/Acrylics

The Innovators Not Imitators

Chemical Concepts, Inc., has revolutionized the Granite and Solid Surface countertop market for 20 years, starting with the use of bonded fasteners for under mounting sinks, to the development of support systems for overhangs. We have 45+ years of experience with adhesives, longer than anyone else in the fabrication industry. You can purchase adhesives from many sources, but only **Chemical Concepts** has the expertise to solve your adhesive problems. **Chemical Concepts** is the home of Chem-set™, CounterBalance™, C-19 Seaming Adhesive, and No-Drill Fasteners.

When it comes to fabrication supplies, don't settle for second best.



25ml



50ml



600ml

Available in 250ml or 600ml u-TAH cartridge which fits in standard caulking guns

Chem-Set™ 633 Gel Epoxy

- 25 ml, 50 ml or 400 ml
- High Viscosity
- Bonds to stone, wood and porous substrates
- Use for rodding, laminating, and bonding sink fasteners

Chem-Set™ 633 LV Epoxy

- 400ml and 600ml
- Low Viscosity
- 5 minute epoxy
- Great for rodding and laminating



25ml



50ml

Chem-Set™ 605 Quick Set Acrylic

- 25ml or 50ml
- For engineered stone and solid surface
- Exceptional bonds to non porous substrates
- Also bonds plastics, metals, and many substrates
- Use for bonding sink fasteners and other structural applications

All these products are available in bulk packaging (1 gallon and buckets)

Contact Cement

Chem-Set™ Specialty Contact Cement Adhesives



Highest Available Strength!

Chem-Set™ 300M

- Non-Flammable
- Low VOC/OTC compliant
- Solvent based
- Spray grade
- High solids
- Available in pails and drums*
- Bonds plastic laminates, metals, foams, and wood

Chem-Set™ 305 Low VOC

- Flammable
- Low VOC
- Spray Grade
- High solids
- SBR rubber
- Available in pails and drums*
- Bonds plastic laminates, metals, foams, and wood

Chem-Set™ 315M

- Solvent based
- Spray grade
- High temperature
- Post form grade
- Brush, roller, or spray
- Neoprene rubber based
- Available in pails and drums*
- Bonds plastic laminates, metals, foams, wood, and automotive vinyl.

Chem-Set™ 205M

- Non-flammable
- Low VOC/OTC compliant
- Solvent based
- Long open time
- High solids
- Brush, roller, or spray
- Available in pails and drums*
- Bonds plastic laminates, metals, foams, and wood

*5 gallon pails pictured

See our complete line of contact adhesives @ chemical-concepts.com

Underwater Adhesive/Aerosols



H₂O GLUE®

H2O Glue® Underwater Adhesive

Epoxies and Acrylics that bond underwater

- Bonds Underwater
- Use wet or dry
- Acrylic bonds plastics
- Epoxy bonds stone and wood



Complete line of aerosols available!



Q320

Full quality aerosol line is available in cans, canisters, quarts, gallons, 5 gallon pails, 55 aerosol cylinders.



Contact Adhesives

Q5000 High temperature strength solvent contact adhesive

Q5200 Flammable contact adhesive, VOC Compliant in all states

Q5500 Water born contact adhesive, VOC Compliant in all states



Adhesive Remover

Q8200 Adhesive Remover/Gun & Hose Cleaner

Besides being an adhesive remover, can be used to clean guns and hoses

Pressure Sensitive Adhesives

Q6000 High solids solvent pressure sensitive adhesive

Q6200 Flammable pressure sensitive adhesive
VOC compliant in all states

Q7200 Expanded polystyrene adhesive

See our complete line of products @ chemical-concepts.com



Aerosols

Bostik Woodworking Aerosol Lubricants



Bearing Lubricant 5.5 oz. —12 per case

- Withstands extreme loads and heat
- High temperature industrial glue gun
- Ergonomic design long trigger for less effort



GlideCote 10.75 oz. —12 per case

- Table and Tool Surface Sealant
- Sealant to protect hand tools against rust and corrosion
- Repels dirt and grime from building up on all surfaces



BladeCote 10.75 oz. —12 per case

- Blade and Bit Lubricant
- Extends blade life
- Prevents resin build-up and reduces blade cleaning
- Superb, long lasting, penetrating lubricant
- Use for industrial, commercial and household uses

See our complete line of Bostik adhesives @ chemical-concepts.com



Hot Melts

Chem-Set™ Hot Melt Adhesives



Sold Only in 20 or 25 lb cartons

additional sizes:

701R10 1/2 x 10" • 701R15 1/2 x 15"
707R10 1/2 x 10" • 711R10 1/2 x 10"
711R15 1/2 x 15" • TC725 5/8 x 2"
TC735 5/8 x 2" • Q707 5/8 x 10"

Warning: Contact with skin can cause severe burns!

725R10

- General purpose for porous and non-porous materials
- Use on metals, ceramics, coated papers, non-porous materials
- Sizes: 1/2" x 10", 5/8" x 2"
- Colors: 725R10-Translucent

735R10

- High strength hot melt
- Use on metals, ceramics, coated papers, non-porous materials
- Sizes: 1/2" x 10", 5/8" x 2"
- Colors: 735R10-Amber



HM612

- For use with CCH220 gun
- Full cure in 5 minutes • Will not get brittle
- One stick covers 4 linear feet
- Newest technology in hot melts using acrylic resins for stronger bonds

Other formulations available—call for more information

About hot melts...

Hot Melts are made of thermoplastic polymers which can be heated repeatedly and cooled without change in their chemical structure. Being 100% solid material they do not present the problems associated with solvent based adhesives.

Hot Melts bond or grab in seconds reaching 50% of bond strength in one minute, 75% in one hour and 100% in twenty four hours.

Liquid hot melts can reach temperatures of 400°F.

See our complete line of hot melt adhesives @ chemical-concepts.com



Hot Melt Dispense Guns

Chem-Set™

Hot Melt Dispense Guns



PRO9000A

- 200 watts of power • 1/2" or 7/16" glue stick diameter
- High temperature industrial glue gun
- Stainless steel heater with thermostat temperature control
- Lighted on/off switch • Double insulated ground cord



CCH220

- 220 watts of power • Full cure in 5 minutes
- Use with 1/2" diameter sticks—Chem-set™ HM612 hot melt adhesive
- Complete with stand, on/off switch and adjustable thermo



PRO2-100

- 100 watts of power
- Use 1/2" or 7/16" glue stick diameter
- High temperature industrial glue gun
- Ergonomic design long trigger for less effort



GGK100

Portable Butane Hot Melt Gun with carry case

- Handles 2 hours of fuel—140 minutes continuous run time
- Bonds chipboard and wood, fasten plastics, light metals and textiles
- 3 nozzles, 3.75 oz can of butane, case has a slot to hold butane
- Use 1/2" or 7/16" glue stick diameter • Additional butane available

See our complete line of adhesive dispensers @ chemical-concepts.com



Hot Melt Dispense Guns



Hot Melt Dispense Guns



PRO8000A

- 180 watts of power, 120 Volts
- 1/2" or 7/16" glue stick diameter
- High temperature industrial glue gun with dual heaters
- Ergonomic design long trigger for less effort
- 2 minute quick heat up time
- Lighted on/off switch



HYBRID120

- Cordless: 18 volt, 120 watts • Coded: 110 volt, 90 watts
- Uses: Ryobi 18V One+Lithium-ion Technology Compact Battery
- 1/2" or 7/16" x 10 standard (.43) glue stick diameter
- High temperature industrial glue gun with dual heaters
- Ergonomic design long trigger for less effort
- Gun only (components sold separately)
- On/off switch battery switch

Also available separately



PRO2-450

- 450 watts of power • Use 5/8" (.625") glue sticks
- High temperature industrial glue gun
- Adjustable temperature control
- Comfortable ergonomic design
- Glue output stroke adjustment • Removable metal stand
- Interchangeable nozzle • Lighted on/off power switch

See our complete line of adhesive dispensers @ chemical-concepts.com

Dispense Guns

Chem-Set™ We stock Manual & Pneumatic Adhesive Dispense Guns from Cox, Newborn, Sulzer and Albion.



CCH50G

- For use with 50 ml cartridges
- Easily converts to 1:1, 2:1, 4:1, 10:1



535XSP

- 26:1 Thrust ratio
- Easily converts to 300 ml x 300 ml, 300 ml x 150 ml, 300 ml x 75 ml



DK Converter

- For use with 50 ml cartridges
- Caulk gun adapter for use inside caulk gun: 1:1, 2:1, 4:1, 10:1
- Converts 50ml dual cartridges for use in standard 1/10th gal. caulking guns

**DK Converter fits inside caulk gun*

** Pictured inside 250 caulk gun*



M380

- 18:1 Thrust ratio
- For use with coaxial cartridges
- Available gun ratios: 1:1, 2:1, 4:1, 10:1



830A30

- Multi Ratio Pneumatic 2-part Adhesive Dispensing Gun
- 300ml x 300ml, 300ml x 150ml, 300ml x 75ml, 150ml x 150ml
- Nominal Thrust, 490 lbs. @ 100psi 2.5" Cylinders



520 GUN

- 18:1 Thrust ratio
- Easily converts to 75 ml, 150ml, 180ml



250 HIGH THRUST Caulk Gun

- 18:1 Thrust ratio
- For use with one part adhesives/sealants in 1/10 gal caulking cartridges



VR200XSP

- 26:1 Thrust ratio
- For use with 220 ml mixpac and TAH cartridges
- Easily converts to 1:1, 2:1, 4:1 and 10:1



DM200

- Torsion free construction
- Integrated Pressure Relief
- No dripping

See our complete line of Chem-set™ Dispense Guns @ Chemical-concepts.com



Stone Repair Kits

Repair chips, gouges and cracks on your stone surfaces



Chem-Set™ Chip Repair Kit

- (A) 1 bottle of Chem-Set A 2400 400 High Viscosity Cyanocrylate
- (B) 1 Bottle of Chem-Set Quick-Tac Activator used to cure the cyanoacrylate
- (C) 1 Bottle of Chem-Set CC5 CA A Low Viscosity Cyanocrylate
- Quickly repairs chips, gouges, and small cracks on the job
- For Shop Use or Retail*



Chem-Set™ UV Stone Repair 10ml Consumer Kit

- For permanent repairs of natural stone, engineered stone, and other surfacing materials
- Non-yellowing • UV stable
- Fast repairs of natural and engineered stone
- Fixes scratches, nicks, gouges, and chips
- Tough permanent repair. Does not fracture or crack.



Chem-Set™ UV Stone Repair 50ml Pro Kit

- For permanent repairs of natural stone, engineered stone, and other surfacing materials
- Non-yellowing • UV stable
- Fast repairs of natural and engineered stone
- Fixes scratches, nicks, gouges, and chips
- Tough permanent repair. Does not fracture or crack.

*Private Labeling Available



Abrasives



SIA ABRASIVE DISCS

Chemical Concepts is a full line supplier of Sia Abrasives

1950 siaspeed siafast

- For sanding solid surfaces
- Mixed Grit Types/Semi-friable Aluminum Oxide
- Backing: C-wt paper
- High-performance sanding minerals ensure very high removal rate and long life
- Available in finer grits and white
- Consistent, uniform finish



6120 siaspeed siafast

- Keying and matte sanding solid surface
- Mixed Grit Types/Aluminum Oxide or Silicon carbide
- Improved flexibility for hard to reach areas
- Improved tear resistance
- Compare with 3M scotch brite™



7940 siaair

- Ultra fine sanding of solid surface
- Foam backing aluminum oxide grit
- Great cost/value proposition
- Compare with 3M Trizac
- Wet or dry



Is one of the world's leading manufacturers of high quality abrasives. For over 135 years, the company headquartered in Frauenfeld/Switzerland has developed manufactured and marketed complete abrasive systems tailored to specific requirements and applications for surface preparation and finishing on work pieces of all kinds.

See our complete line of sia abrasives @ chemical-concepts.com



Sanders, Abrasives and Pads

USING A 6" DA (DUAL ACTION) SANDER?

You should try our **Chem-Set™ 11" Electric Orbital Sander.**
It will cut your labor costs as much as 50%



Electric Orbital Sander

The latest innovation for...
SOLID SURFACE, WOODWORKING AND METAL FABRICATION INDUSTRIES!

This heavy duty machine runs at 1700 "orbits" per minute without the possibility of creating the swirl marks associated with high-speed rotary buffers. Smooth, hand-polish action safeguards against surface damage. GEM'S counter weight system is well balanced and smooth running, so you can guide the sander over the surface and let the 18 lbs. of weight do the work for you.

GEM's orbital action sands, polishes and finishes with a motion like that of the human hand. Sands equally well and uniformly on solid surface, wood and metal products.

The Gem Sander comes with a 11" drive pad that utilizes the hook and loop sandpaper. Chemical Concepts provides a full line of abrasives to be used with the Gem Sander.

FEATURES

Features

- Heavy-duty ball bearing capacitor motor
- No gears to grind or strip out
- No armature winding to burn out
- No carbon brushes to burn out
- Exclusive removal shaft system
- Sands, polishes and finishes

SPECIFICATIONS

Specifications

- Weight.....18 lbs.
- Overall height.....10in.
- Amps..... 2.3@110v, 1.2@220v
- RPM.....1,77@11v
- Moto..... 110v/220v
- Housing.....heavy-duty aluminum

Abrasives

Sanding Pads

GREAT QUALITY!

Maroon and Gray Scuff

6"

PSA & Hook and Loop

5"

PSA & Hook and Loop

- Scuff Pads
- Reasonably Priced!
- PSA and Hook and Loop
- Assortment of Grits: 80, 120, 180, 220, 320



Sandpaper

11" Aluminum Oxide

25 sheets per box | 80 Grit • 120 Grit • 180 Grit • 220 Grit

ScotchBrite 11"

10 sheets per box | Available in Gray or Maroon

5" and 6" paper also available – call for pricing

See our complete line of sanders, abrasives and pads @ chemical-concepts.com



Tapes

Chem-Set™ VST High Bond Tapes



All types available in 1/2", 3/4", 1"
Ask about!
Interior Double Coated Foam Tape

VST Tape	Color	Thickness
6120	Gray or White	47 ml
6364	White	25 ml
6100	Clear	40 ml
3050	Clear	20 ml
3025	Clear	10 ml

Foil Tape #FT30SW

Aluminum Foil/Acrylic Adhesive
 3 Mil x 60 Yards Per Roll

- Designed to stick firmly to it's own backing
- Great for installing cook tops in solid surface
- Premier product for masking in paint stripping and electroplating
- Used for waterproofing, vapor barrier, and air leakage protection.
- High reflectivity assures effective heat, light interference, and electrical insulation shielding
- Surface film protection



V-Groove Tape #CCT-Pes-32G

3 Mil x 60 Yards Per Roll

- V Groove tape with an extremely aggressive hot melt rubber based adhesive that insures instant holding power and provides a quick and reliable seal when used on RSC boxes and fiber drums
- For use in the solid surface fabrication and wood working industry
- Temperature range of 35°F to 130°F
- Tan color is 10% higher in price and meets PPP-T-60E, Type 3, Class 1, and the clear-meets the specs for Class 2. It is also certified to PPP-T-70, A-A-1684-B and A-A-1830-A



See our complete line of Chem-set™ Tapes @ Chemical-concepts.com



Tapes

Tesa Masking tape #4334

Precision Masking Tape 90 µm

- Yellow general purpose masking tape
- Razor sharp paint edges
- Easily removable up to 5 months after application
- Suitable surfaces: glass, aluminium, hard-PVC and wood; especially suited for indoor applications

Main Applications: This tape is suited for almost all indoor paint works. tesa® 4334 Precision Mask® is applicable with water-based paints and lacquers and fits even for high-class spatula techniques.



Tesa Masking tape #53120

General-Purpose Masking Tape 5.2 Mil

- Cost efficient creped paper masking tape, good for bundling, holding, sealing, and surface protection
- Light-duty bundling
- Packaging and closing
- Light-duty masking
- Natural rubber adhesive



Chem-Set™ Surface protection film #PRES40L60

Surface protection film

- Chem-Set's counter protection film is used to protect counters and marble/granite pieces from damage during storage, construction, and transportation. It can be safely applied to the surface without damaging the counter or leaving residue.
- Chem-Set offers a variety of other surface protection films for various surfaces and circumstances including: *Metal, sinks, plastic, fiberglass, vinyl, stainless steel, glass, aluminum, tubs, roofs & buildings*



See our complete line of Chem-set™ Tapes @ Chemical-concepts.com



Undermount Sinks

Chem-Set™

Undermount Sink Kits

For Natural Stone, Solid Surfaces and Engineered Stone



CCH740K For Natural Stone

- Contains:** 633 50ml Tube
 4 M1B38 3/4 Fasteners
 4 CCH730S Washers
 4 CCH732G Clips
 2 F1CT38 Dishwasher Clips
 w/ Phillip screw CCH50G gun
 4 TAH 190-620 Mixers



CCH741K For Solid Surface and Engineered Stone

- Contains:** 605 50ml Tube
 4 M1B38 3/4 Fasteners
 4 CCH730S Washers
 4 CCH732G Clips
 2 F1CT38 Dishwasher Clips
 w/ Phillip screw CCH50G gun
 4 TAH 190-620 Mixers



CCH742K For Natural Stone

- Contains:** 633 25ml Cartridge
 4 M1B38 3/4" Fasteners
 4 CCH730S Wing nut
 4 CCH731 Washers
 4 CCH732G Clip
 2 F1CT38 Dishwasher Clip w/ Phillip Screw
 2 Plastic Mix Cups
 2 Mix Sticks



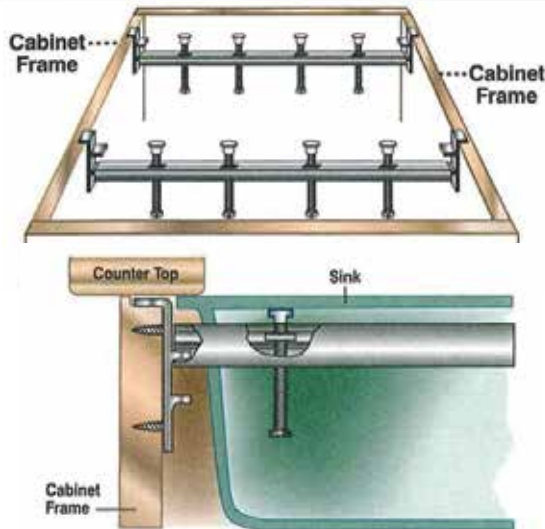
CCH743K For Solid Surface and Engineered Stone

- Contains:** 605 25ml Cartridge
 4 M1B38 3/4" Fasteners
 4 CCH730S Wing nut
 4 CCH731 Washers
 4 CCH732G Clip
 2 F1CT38 Dishwasher Clip w/ Phillip Screw
 2 Plastic Mix Cups
 2 Mix Sticks

See our complete line of Chem-set™ Undermount Sink Kits @ Chemical-concepts.com

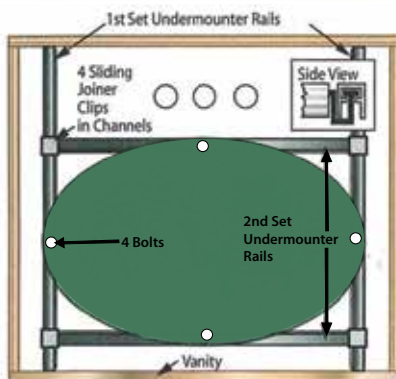
Undermount Sinks™

VANSEAL Sink Undermounter



- Easily undermounts any sink including ovals and rounds
- Use with solid surface or granite countertop materials

- Eliminates the need for wood supports
- Saves time, money, and materials



Installation shown above

FULLY ADJUSTABLE AND REMOVABLE

- 25", 36", and 50" lengths easily trim to fit any cabinet size
- Use side to side or front to back
- Hardware supplied for all installations

(Two undermounter packages are needed for ovals and rounds)

SINKITS™ SINK MOUNTING CLAMP

- Patent Pending new clamp design for undermounting sinks to granite, quartz, concrete or any other stone or hard surface material.
- Universal design works with all type sinks up to 3/4" thick rim!
- There is no other way to undermount sinks that match the combination of speed, strength, versatility and ease of Sinkits sink clamps!"



T31 TBolts Sink Mounting Anchors

- 1/4" x 1 1/2" • Stainless Steel
- Anchoring system for undermount sinks



Bonding Fasteners

Chem-Set™

No Drill FASTENERS

No drilling or welding! Mounts using structural adhesives



Available in stainless steel, aluminum or zinc plated

Please see our website for available sizes and dimensions



Use **Chem-Set™ No Drill Bonding Fastener** to replace rivets, tapes and welds.

- Bonds with metals, plastics, wood, composites, stone.
- Available in Zinc plated, yellow chromate steel and stainless steel
- No drilling or taping



Applications: *Mounting, Wall Attachments, Under Mount Supports. Creative uses still being explored.*



Bonding Fasteners

TYPE M1 MALE BOLT STUDS

Available in both imperial and metric threads in a variety of lengths.

MOST POPULAR BONDING FASTENERS



Type: M1-B23



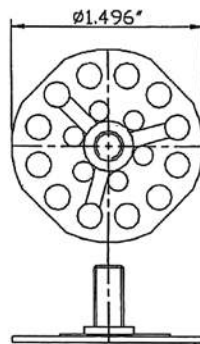
Available in plated steel and stainless steel
(plating meets European standards)

M1-B23 (23MM / 0.90") ROUND

THREAD SIZE	LENGTH			
1/4 UNC	.75"	1"	1.5"	2"
10/32 UNF	.75"	1"	1.25"	2"



Type: M1-B38

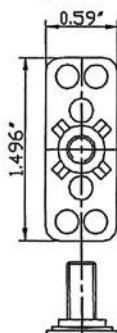


M1-B38 (38MM / 1.5") ROUND

THREAD SIZE	LENGTH							
1/4 UNC	.675"	.75"	1"	1.25"	1.5"	2"	2.5"	3"
10/32 UNF	.675"	.75"	1"	1.25"	2"			
3/8 UNC	1.5"	2"	2.5"	3"				



Type: M1-T38



M1-T38 (38MMX15MM/ 1.5"X.59") RECTANGLE

THREAD SIZE	LENGTH					
1/4 UNC	.5"	.75"	1"	1.5"	2"	3"
10/32 UNC	.75"	1"	1.5"			

Most popular bonding fasteners and sizes illustrated. See website for our complete line of fasteners @ Chemical-concepts.com



Bonding Fasteners

TYPE F2 FEMALE COLLARS

F2 - Female Threaded Collars of various lengths mounted on a variety of baseplates.
Available in both imperial and metric threads.

**MOST POPULAR
BONDING FASTENERS**



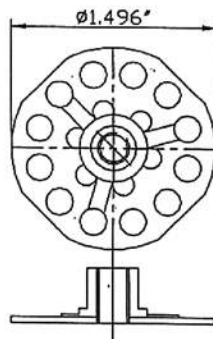
Type: F2-B23



F2-B23 (23MM / 0.90") ROUND		
THREAD SIZE	LENGTH	
1/4 UNC	.375"	.5"



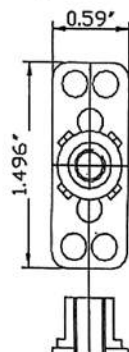
Type: F2-B38



F2-B38 (38MM / 1.5") ROUND			
THREAD SIZE	LENGTH		
1/4 UNC	.375"	.5"	.75"
10/32 UNF	.625"		1"
3/8 UNC	.375"		
5/16 UNC	1"		



Type: F2-T38



F2-T38 (38MMX15MM/ 1.5"X.59") RECTANGLE	
THREAD SIZE	
1/4 UNC	
10/32 UNF	

Most popular bonding fasteners and sizes illustrated. See website for our complete line of fasteners @ Chemical-concepts.com



Bonding Fasteners

TYPE F1 HEX NUTS

F1 - Female Hex Nuts securely mounted on a variety of perforated baseplates.

Available in both Inch and metric threads.

**MOST POPULAR
BONDING FASTENERS**



Type: F1-B23



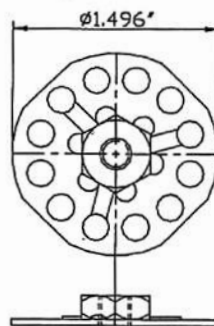
F1-B23 (23MM / 0.90") ROUND

THREAD SIZE

- 1/4 UNC
- 5/16 UNC



Type: F1-B38



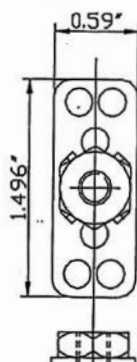
F1-B38 (38MM / 1.5") ROUND

THREAD SIZE

- 1/2 UNC
- 1/4 UNC
- 10/32 UNF
- 3/8 UNC
- 5/16 UNC



Type: F1-T38



F1-T38 (38MMX15MM/ 1.5"X.59") RECTANGLE

THREAD SIZE

- 1/4 UNC

Most popular bonding fasteners and sizes illustrated. See website for our complete line of fasteners @ Chemical-concepts.com



410 Pike Road • Huntingdon Valley, PA 19006

TOLL FREE: 800.220.1966

Phone: 267.684.1038 • Fax: 215.357.2754 • Email: sales@chemical-concepts.com

chemical-concepts.com