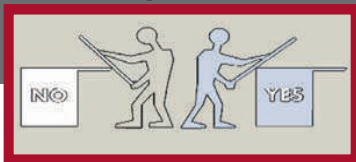


# Counter Top Setting Instructions



NEVER set tops directly on plate or bracket at an angle when setting tops.

ALWAYS set tops from opposite side of stud wall or from front of cabinet.

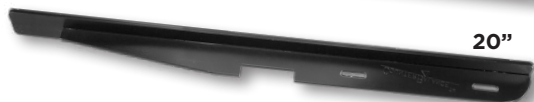
## ISLANDBAR and ISLANDBAR MINI

SKU: CCH-CBIB2



24"

SKU: CCH-CBIBM



20"



Check out our installation videos:  
[youtube.com/user/ShopCB](https://www.youtube.com/user/ShopCB)



Order online at [counterbalanceshop.com](https://counterbalanceshop.com) or call 1.800.220.1966

These are general guidelines for installation methods, and may not apply to your application. Always consult a qualified contractor and follow their recommendations for proper installation.

MADE IN USA

# COUNTER

## BALANCE®

The support you don't see.

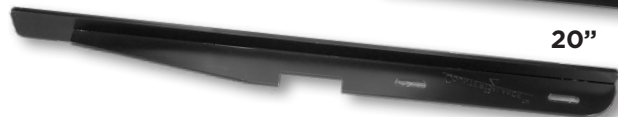
## ISLANDBAR and ISLANDBAR MINI

SKU: CCH-CBIB2



24"

SKU: CCH-CBIBM



20"

## Installation Instructions

The **CounterBalance® Island Bar / Island Bar Mini** are designed to attach to the left or right cabinet wall, supporting overhangs on "island" and "peninsula" countertops above cabinetry.

The **IslandBar** can support up to an 18" overhang. The **IslandBar Mini** is ideal for 10-15" overhangs.



Check out our installation videos:  
[youtube.com/user/ShopCB](https://www.youtube.com/user/ShopCB)



## IslandBar / IslandBar Mini Routered Install

**1** Select locations to install **CounterBalance® IslandBars**. The **CounterBalance® IslandBars** should be installed no more than 16-20" apart for optimum performance.

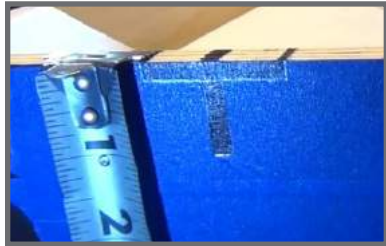
**2** The **CounterBalance® IslandBar** has a notch to aid installation when installed at full length. The **CounterBalance® IslandBar** can also be installed further back into the cabinet to accommodate overhangs shorter than 15".



When used with overhangs less than 15", the IslandBar can be positioned further into the cabinet. Supports should be spaced no more than 16" to 20" apart for optimum performance.

Position the **CounterBalance® IslandBar** on the cabinet so that the edge of the bracket will sit 3" - 6" back from the edge of your counter surface once installed. Scribe a line on the cabinet wall just behind the rear edge of the bracket.

**3** Using the router with 1/4" bit, route top of cabinet to line at 3/16" depth so that the **CounterBalance® IslandBar** will sit flush on the cabinet.



**4** Trace the "T" profile of the bracket onto the face of the cabinet and mask the surrounding area.

**5** Using a circular saw, or oscillating multitool, cut out the marked area and test fit the bracket as necessary.



Check out our installation videos:  
[youtube.com/user/ShopCB](https://www.youtube.com/user/ShopCB)

**6** Place **CounterBalance® IslandBar** onto top of routered cabinet, mark point in each slot to be drilled, remove bracket.



**7** Drill holes, place **CounterBalance® IslandBar** back into position and attach with screws. Repeat as necessary and set top position.

**8** Apply a silicone sealant to the top of the brackets to secure them to the underside of the counter surface and set countertop into position. Rated up to 500lbs.

### SAFETY INSTRUCTIONS:

- Use the correct tools
- Wear safety goggles & proper safety equipment.
- Follow fixture, power tools, & paint manufacturer's instructions & user manuals.
- Use common sense & follow good construction practices
- Consult a professional when installing brackets for load bearing application.
- Be sure the bracket has a substructure that is able to support the bracket & any other additional weight that may be added to it.
- When in doubt, consult a professional installer