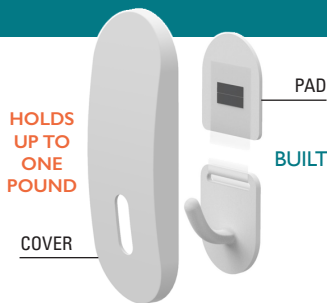


GRIPHOOK™

High-Performance,
Bio-Inspired Adhesive
TECHNOLOGY

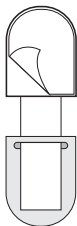


BUILT USING THE **GECKSKIN®** TECHNOLOGY

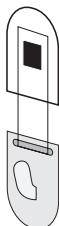
REUSABLE
WALL MOUNTING HOOK
Anytime. Anywhere.

TO START

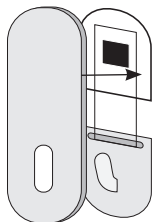
1
Separate the Pad from the Cover. Peel back the clear liner from the Pad



2
Press the Pad firmly onto the wall

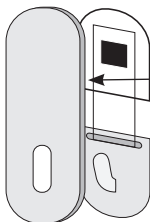


3
Put the cover on the Pad. The cover should fit snugly over the Pad

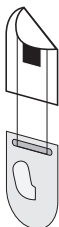


TO REPOSITION

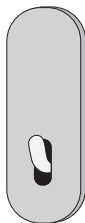
1
Take the cover off the hook



2
Peel carefully
Peel slowly & diagonally across the device
Do not pull straight out



3
Reposition, press & replace the cover



GRIPHOOK™

Inspired by Nature

CLEANING INSTRUCTIONS

Use soap and water
(scrub with a sponge if necessary)
or rubbing alcohol.
Let the device dry before reusing it.



Holds up to one pound



Non Damaging



Reusable & Movable

MADE IN THE U.S.A

THINK LIKE **GECKSKIN**
for the best results

PRESS the device onto the
surface to secure the Grip

PEEL slowly diagonally down
(it's called a 180° Peel) to minimize damage

Limited Warranty and Limitation of Liability

FELSUMA products, with the exception of products labeled as EXPERIMENTAL, will be free from manufacturing defects at the time of sale. If a NON-EXPERIMENTAL product is defective, your exclusive remedy shall be, at Felsuma's option, replacement of the product or refund of the purchase price. Felsuma will not be liable for any loss or damage arising from this product, whether direct, indirect, special, incidental or consequential.

Failure to follow instructions may cause damage. Please visit www.buygeckskin.com to view videos for proper usage. Most importantly, please be careful. Gravity is unrelenting. Do not hang over sitting or sleeping areas, or fragile or breakable items. This product is not recommended for textured or fabric-covered surfaces. Do not hang valuable, fragile or irreplaceable items. This product is intended for use in "normal" indoor conditions.

Patented, see: www.BUYGECKSKIN.com/patents