

Core Range

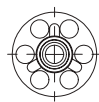
Bonding Fasteners



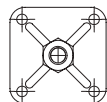
M1 - Male Threaded Post

Heavy duty stud mount bonding fasteners with a threaded bolt on a baseplate. Bonding fasteners can be embedded during the molding process or adhesively mounted to virtually any substrate.

SKU	M/F	Post, Nut or Collar	Base Size	Base Type	Imperial/Metric	Thread	Length	Material
CCH-M1B23-1/4-20X1	M	Post	23mm (.9") Round	Standard	Imperial	1/4"-20	1"	Zinc Plated Steel
CCH-M1B23-1/4-20X3/4	M	Post	23mm (.9") Round	Standard	Imperial	1/4"-20	3/4"	Zinc Plated Steel
CCH-M1Y3232-1/4-20X1	M	Post	32mm (1.25") Square	RS (Solid Base Plate)	Imperial	1/4"-20	1"	Zinc Plated Steel
CCH-M1T38-10-32X3/4	M	Post	38mm X 15mm (1.5" X .6") Rectangular	Standard	Imperial	10-32	3/4"	Zinc Plated Steel
CCH-M1T38-1/4-20X1	M	Post	38mm X 15mm (1.5" X .6") Rectangular	Standard	Imperial	1/4"-20	1"	Zinc Plated Steel
CCH-M1T38-1/4-20X3/4	M	Post	38mm X 15mm (1.5" X .6") Rectangular	Standard	Imperial	1/4"-20	3/4"	Zinc Plated Steel
CCH-M1Y3815-1/4-20X1	M	Post	38mm X 15mm (1.5" X .6") Rectangular	RS (Solid Base Plate)	Imperial	1/4"-20	1"	Zinc Plated Steel
SPE-PR16R3815060.12	M	Post	38mm X 15mm (1.5" X .6") Rectangular	Standard	Metric	M6	16mm	Zinc Plated Steel
CCH-M1B38-10-32X3/4	M	Post	38mm (1.5") Round	Standard	Imperial	10-32	3/4"	Zinc Plated Steel
CCH-M1B38-1/4-20X1/2	M	Post	38mm (1.5") Round	Standard	Imperial	1/4"-20	1/2"	Zinc Plated Steel
CCH-M1B38-1/4-20X3/4	M	Post	38mm (1.5") Round	Standard	Imperial	1/4"-20	3/4"	Zinc Plated Steel
CCH-M1B38-1/4-20X1	M	Post	38mm (1.5") Round	Standard	Imperial	1/4"-20	1"	Zinc Plated Steel
CCH-M1B38-1/4-20X1-1/4	M	Post	38mm (1.5") Round	Standard	Imperial	1/4"-20	1-1/4"	Zinc Plated Steel
CCH-M1B38-1/4-20X1-1/2	M	Post	38mm (1.5") Round	Standard	Imperial	1/4"-20	1-1/2"	Zinc Plated Steel
CCH-M1B38-1/4-20X3	M	Post	38mm (1.5") Round	Standard	Imperial	1/4"-20	3"	Zinc Plated Steel
CCH-M1Y38-1/4-20X3/4	M	Post	38mm (1.5") Round	RS (Solid Base Plate)	Imperial	1/4"-20	3/4"	Zinc Plated Steel
CCH-M1Y38-1/4-20X1	M	Post	38mm (1.5") Round	RS (Solid Base Plate)	Imperial	1/4"-20	1"	Zinc Plated Steel
CCH-SSM1B38-1/4-20X1	M	Post	38mm (1.5") Round	Standard	Imperial	1/4"-20	1"	Stainless Steel



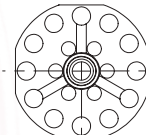
M1B23



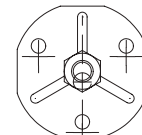
M1Y3232



M1T38



M1B38



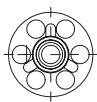
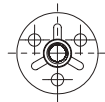
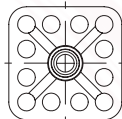
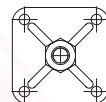
M1Y38

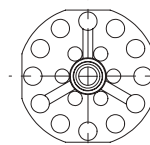
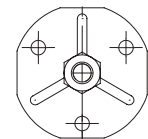


F1 - Female Hex Nut

These female threaded fasteners allow for easy bolt alignment and can be used in either through-hole or blind-hole applications.

SKU	M/F	Post, Nut or Collar	Base Size	BaseType	Imperial/Metric	Thread	Material
CCH-F1B23-10-24	F	Nut	23mm (.9") Round	Standard	Imperial	10-24	Zinc Plated Steel
CCH-F1B23-1/4-20	F	Nut	23mm (.9") Round	Standard	Imperial	1/4"-20	Zinc Plated Steel
CCH-SSF1B23-1/4-20	F	Nut	23mm (.9") Round	Standard	Imperial	1/4"-20	Stainless Steel
CCH-F1Y23-1/4-20	F	Nut	23mm (.9") Round	RS (Solid Base Plate)	Imperial	1/4"-20	Zinc Plated Steel
CCH-F1SB30-1/4-20	F	Nut	30mm (1.20") Square	Standard	Imperial	1/4"-20	Zinc Plated Steel
CCH-F1SB30-1/2-13	F	Nut	30mm (1.20") Square	Standard	Imperial	1/2"-13	Zinc Plated Steel
CCH-F1Y3232-1/4-20	F	Nut	32mm (1.25") Square	RS (Solid Base Plate)	Imperial	1/4"-20	Zinc Plated Steel
CCH-F1T38-10-24	F	Nut	38mm X 19mm (1.5" X .75") Rectangular	Standard	Imperial	10-24	Zinc Plated Steel
CCH-F1CT38-10/32NF	F	Nut	38mm X 19mm (1.5" X .75") Rectangular	Closed Back	Imperial	10-32	Zinc Plated Steel
CCH-F1TM38	F	Nut	38mm X 19mm (1.5" X .75") Rectangular	Adjustable	Imperial	10-32	Zinc Plated Steel
CCH-F1T38-1/4-20	F	Nut	38mm X 19mm (1.5" X .75") Rectangular	Standard	Imperial	1/4"-20	Zinc Plated Steel
CCH-F1B38-1/4-20	F	Nut	38mm (1.5") Round	Standard	Imperial	1/4"-20	Zinc Plated Steel
CCH-F1B38-10-24	F	Nut	38mm (1.5") Round	Standard	Imperial	10-24	Zinc Plated Steel
CCH-F1CB38-1/4-20	F	Nut	38mm (1.5") Round	Closed Back	Imperial	1/4"-20	Zinc Plated Steel
CCH-F1B38-5/16-18	F	Nut	38mm (1.5") Round	Standard	Imperial	5/16"-18	Zinc Plated Steel
CCH-F1B38-3/8-16	F	Nut	38mm (1.5") Round	Standard	Imperial	3/8"-16	Zinc Plated Steel
CCH-F1B38-1/2-13	F	Nut	38mm (1.5") Round	Standard	Imperial	1/2"-13	Zinc Plated Steel
CCH-SSF1B38-10-24	F	Nut	38mm (1.5") Round	Standard	Imperial	10-24	Stainless Steel
CCH-SSF1B38-1/4-20	F	Nut	38mm (1.5") Round	Standard	Imperial	1/4"-20	Stainless Steel
CCH-SSF1B38-3/8-16	F	Nut	38mm (1.5") Round	Standard	Imperial	3/8"-16	Stainless Steel
CCH-F1Y38-10-24	F	Nut	38mm (1.5") Round	RS (Solid Base Plate)	Imperial	10-24	Zinc Plated Steel


F1B23

F1Y23

F1SB30

F1Y3232

F1T38

F1B38

F1Y38



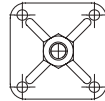
F2 - Female Threaded Collar

These female threaded fasteners have a thread collar allowing for a standoff of a specific height and increased thread engagement.

SKU	M/F	Post, Nut or Collar	Base Size	Base Type	Imperial/Metric	Thread	Length	Material
CCH-F2B23-1/4-20X1/2	F	Collar	23mm (.9") Round	Standard	Imperial	1/4"-20	1/2"	Zinc Plated Steel
CCH-F2Y3232-1/4-20X1/2	F	Collar	32mm (1.25") Square	RS (Solid Base Plate)	Imperial	1/4"-20	1/2"	Zinc Plated Steel
CCH-F2CT38-1/4-20X1/2	F	Collar	38mm (1.5") Rectangular	Closed Back	Imperial	1/4"-20	1/2"	Zinc Plated Steel
CCH-F2B38-1/4-20X1/2	F	Collar	38mm (1.5") Round	Standard	Imperial	1/4"-20	1/2"	Zinc Plated Steel



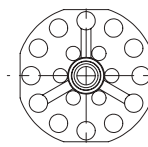
F2B23



F2Y3232



F2T38



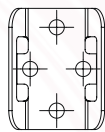
F2B38



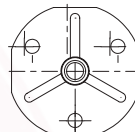
VST High Bond Tape Fasteners

Peel-and-stick high bond tape backed fasteners.

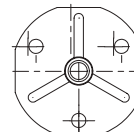
SKU	M/F	Post, Nut or Collar	Base Size	Base Type	Imperial/Metric	Thread	Length	Material
CCH-S1V3221-01P	—	—	(1.25" X .6") Rectangular 32mm X 15mm	VST Base	—	—	—	Zinc Plated Steel
CCH-M1V38-1/4-20X1P	M	Post	38mm (1.5") Round	VST Base	Imperial	1/4"-20	1"	Zinc Plated Steel
CCH-F1V38-10-24P	F	Nut	38mm (1.5") Round	VST Base	Imperial	10-24	—	Zinc Plated Steel



VST Wire Tie



M1V38



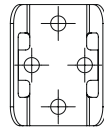
F1V38



S1 - Cable Tie Mount

Cable and wire tie mount plates

SKU	Base Size	Base Type	Material
SPE-PFR08R3221001.51	32mm X 15mm (1.25" X .6") Rectangular	Standard	316 Stainless Steel



Wire Tie Base

ADHESIVE SELECTION CHART

Adhesive	Composites	Plastic	Wood	Metal	Natural Stone	Engineered Stone	Glass*
LORD 406/19	●	●	⊗	●	⊗	○	○
Chem-Set™ Ultralok 420GB	●	●	⊗	●	⊗	○	○
LORD 310A/B	●	●	●	○	●	○	⊗
Huntsman 2015	●	●	●	○	●	○	⊗
Huntsman 2053	●	●	⊗	●	⊗	●	○

● Recommended

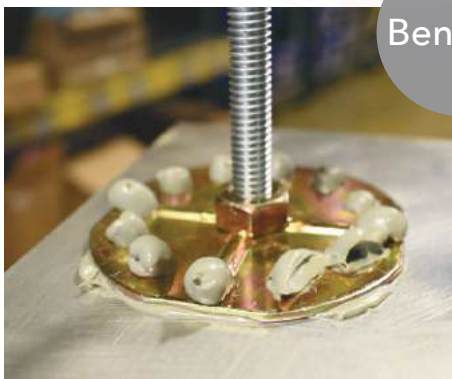
○ Reasonable

⊗ Not suitable

*Primer recommended for optimum bond on glass.

Please refer to adhesive manufacturer specifications for guidance.

Benefits:



- **No drilling or welding required:** Saves time and money, and can be used in areas where welding is a safety hazard.
- **Strong, secure hold:** Distributes weight evenly for a long-lasting bond.
- **Versatile:** Can be bonded to almost any surface, including metal, plastic, and composite materials.
- **Reduced corrosion:** Eliminates the risk of galvanic corrosion between dissimilar metals.